



Click Here For Detailed Floorplan/Specs
TAMARACK BALLROOM - 5,959 SQ FT

[Click Here For Video Tour](#)

JUNIOR BALLROOM - 2,244 SQ FT

[Click Here For Video Tour](#)

THE BALLROOM FOYER

[Click Here For Video Tour](#)

THE BALLROOM TERRACE

[Click Here For Video Tour](#)

THE COTTAGE

[Click Here For Detailed Floorplan/Specs](#)
[Click Here For Video Tour](#)

WHITE PINES - 1,092 SQ FT

[Click Here For Detailed Floorplan/Specs](#)

SPRUCE PEAK PERFORMING ARTS CENTER

[Click Here For Video Tour](#)

THE ALPINE CLUBHOUSE

[Click Here For Detailed Floorplan/Specs](#)
[Click Here For Video Tour](#)

SPRUCE BASE CAMP - 7,920 SQ FT

[Click Here For Detailed Floorplan/Specs](#)

THE SPRUCE PEAK VILLAGE GREEN

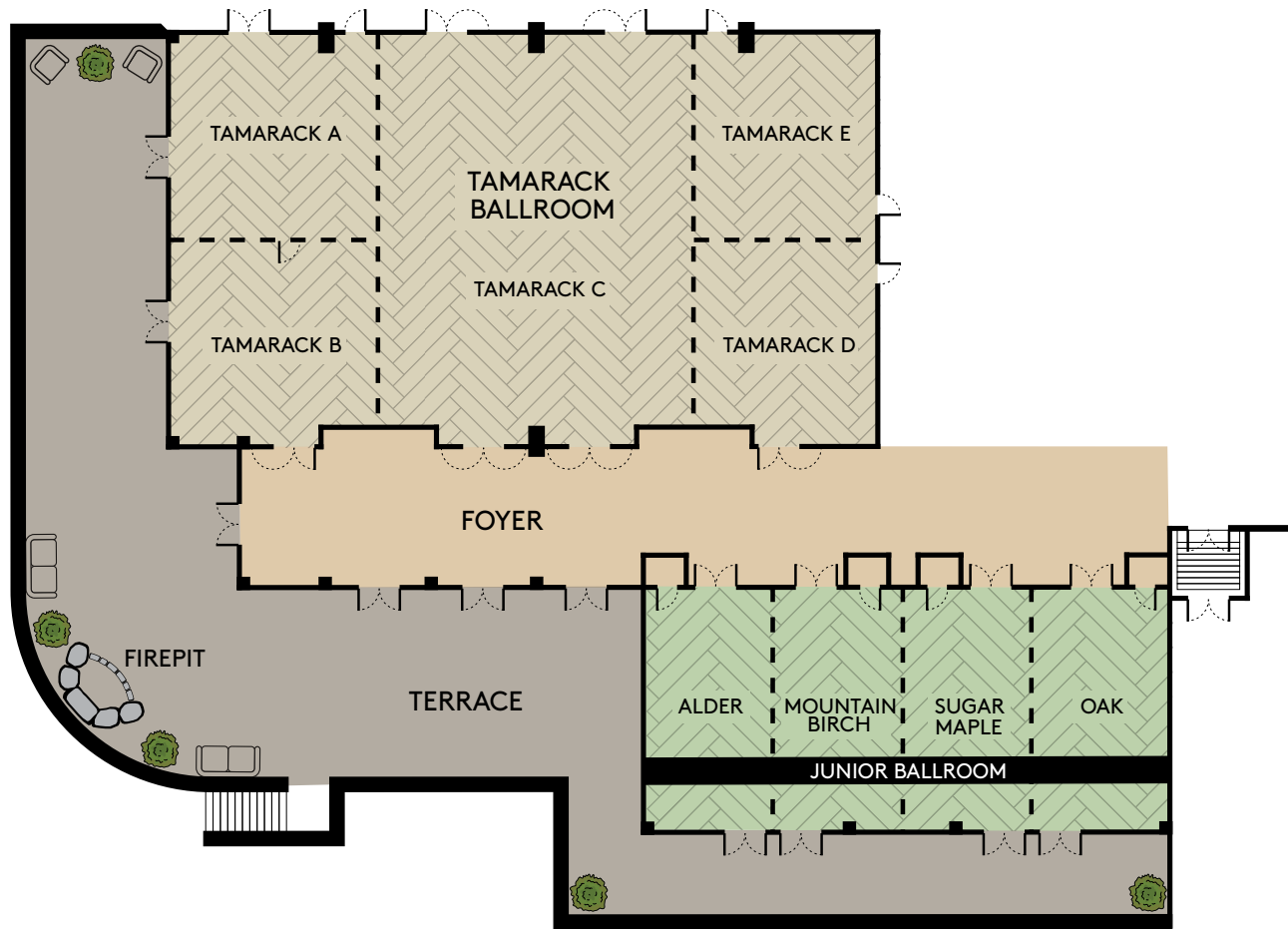
[Click Here For Video Tour](#)

Spruce Peak is committed to the safety and wellbeing of our guests, owners, and staff. In order to provide a healthy meeting environment we have adjusted the following venue capacity charts to reflect 6' social distancing guidelines.



Updated Capacity Limits for Proper Social Distancing

Lodge Venue Space	Square Feet	Dimensions	Theater	Classroom
Tamarack Ballroom	5,959	101' x 59'	125	88
Junior Ballroom	2,448	72' x 34'	64	30
Foyer	2,640	20' x 132'	N/A	N/A
Terrace	3,500	N/A	N/A	N/A
White Pines	1,092	42'x26'	20	15
Additional Venue	Venue Details		Maximum Capacity	
Spruce Peak Performing Arts Center	Fixed Theater Seating		65	
Solstice Restaurant	Banquet or Plated Dinners		30 (Indoors) + 20 (Outdoors)	
Penthouse Suites	Various Set-up Options		5-8	



Meeting Room	Square Footage	Dimensions	Ceiling Height	U Shape	Hollow Square	Conference	Theater	Class-room	Reception	Banquet Rounds	Crescent Rounds of 6
Tamarack Ballroom	5,959	101' x 59'	14'	96	124	130	611	352	580	400	240
Tamarack A	841	29' x 29'	14'	26	32	26	85	48	80	40	30
Tamarack B	841	29' x 29'	14'	26	32	26	85	48	80	40	30
Tamarack C	2,655	59' x 45'	14'	60	76	60	270	160	255	180	108
Tamarack D	754	29' x 26'	14'	26	32	24	85	40	80	40	24
Tamarack E	754	29' x 26'	14'	26	32	24	85	40	80	40	24
Junior Ballroom	2,448	72' x 34'	10.5'	70	84	64	256	120	225	150	90
Alder	612	34' x 18'	10.5'	26	28	24	72	30	68	30	18
Mountain Birch	612	34' x 18'	10.5'	26	28	24	72	30	68	30	18
Oak	612	34' x 18'	10.5'	26	28	24	72	30	68	30	18
Sugar Maple	612	34' x 18'	10.5'	26	28	24	72	30	68	30	18
Foyer	2,640	20' x 132'	12'	N/A	N/A	N/A	N/A	N/A	275	N/A	N/A
Terrace	3,500	N/A	N/A	N/A	N/A	N/A	N/A	N/A	300	160	N/A

THE COTTAGE



THE LODGE
AT SPRUCE PEAK



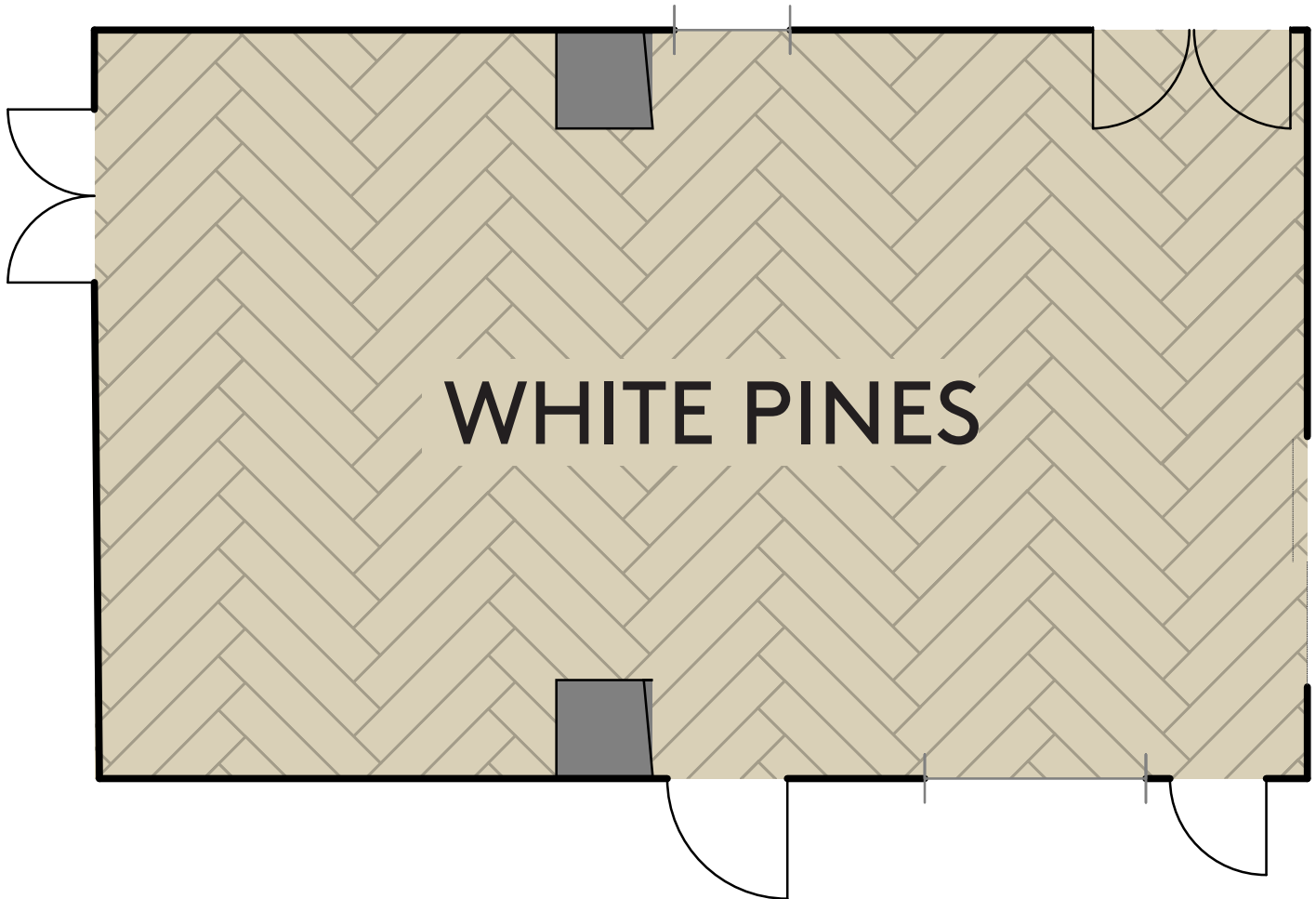
	Square Footage	Dimensions	Ceiling Height	Plated Seating	Reception
Terrace	1,215	54' x 22.5'	10'	40	100
Lounge	720	24' x 30'	Vaulted	25	60
Dining Room	465	15' x 31'	10'		

WHITE PINES

LODGE AT SPRUCE PEAK

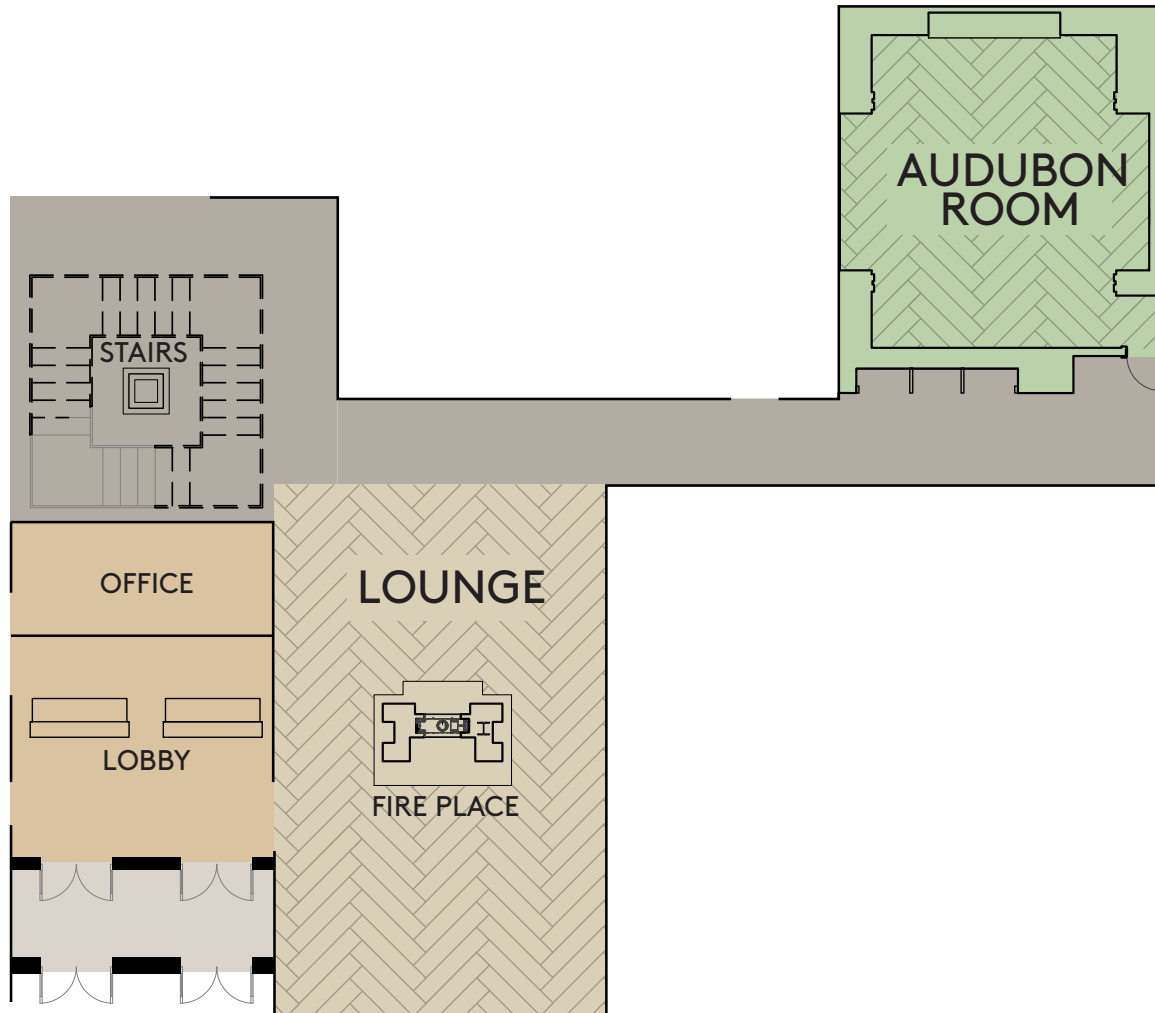


THE LODGE
AT SPRUCE PEAK



Meeting Room	Square Footage	Dimensions	Ceiling Height	U Shape	Hollow Square	Conference	Theater	Classroom	Reception	Banquet Rounds	Crescent Rounds of 6
White Pines	1,092	42' x 26'	9'	36	40	32	80	48	76	60	42

ALPINE CLUBHOUSE



Meeting Room	Square Footage	Dimensions	Ceiling Height	Board Room
Alpine Clubhouse Lounge	1,456	28' x 52'	9.5'	N/A
Audubon Room	520	26' x 20'	9.5'	14

RESTAURANT AND TERRACE

ALPINE CLUBHOUSE



THE LODGE
AT SPRUCE PEAK



	Square Footage	Dimensions	Ceiling Height	Plated Seating	Reception
Bar	531	9' x 59'	9'	N/A	120
Lounge	1,770	30' x 59'	9'	N/A	
Restaurant	1,770	30' x 59'	9'	50	



SPRUCE CAMP BASE LODGE

THE LODGE
AT SPRUCE PEAK



Meeting Room	Square Footage	Dimensions	Ceiling Height	Theater	Class-room	Reception	Banquet Rounds
Spruce Camp Great Room	7,920	88' x 90'	Vaulted	500	236	500	350
Spruce Camp Alpine Lodge	1,155	35' x 33'	12'	80	48	75	60
Spruce Camp Plaza	6,100	99' x 53'	10'	266	80	250	175
Spruce Camp Terrace	3,400	Varies	N/A	N/A	N/A	170	200